

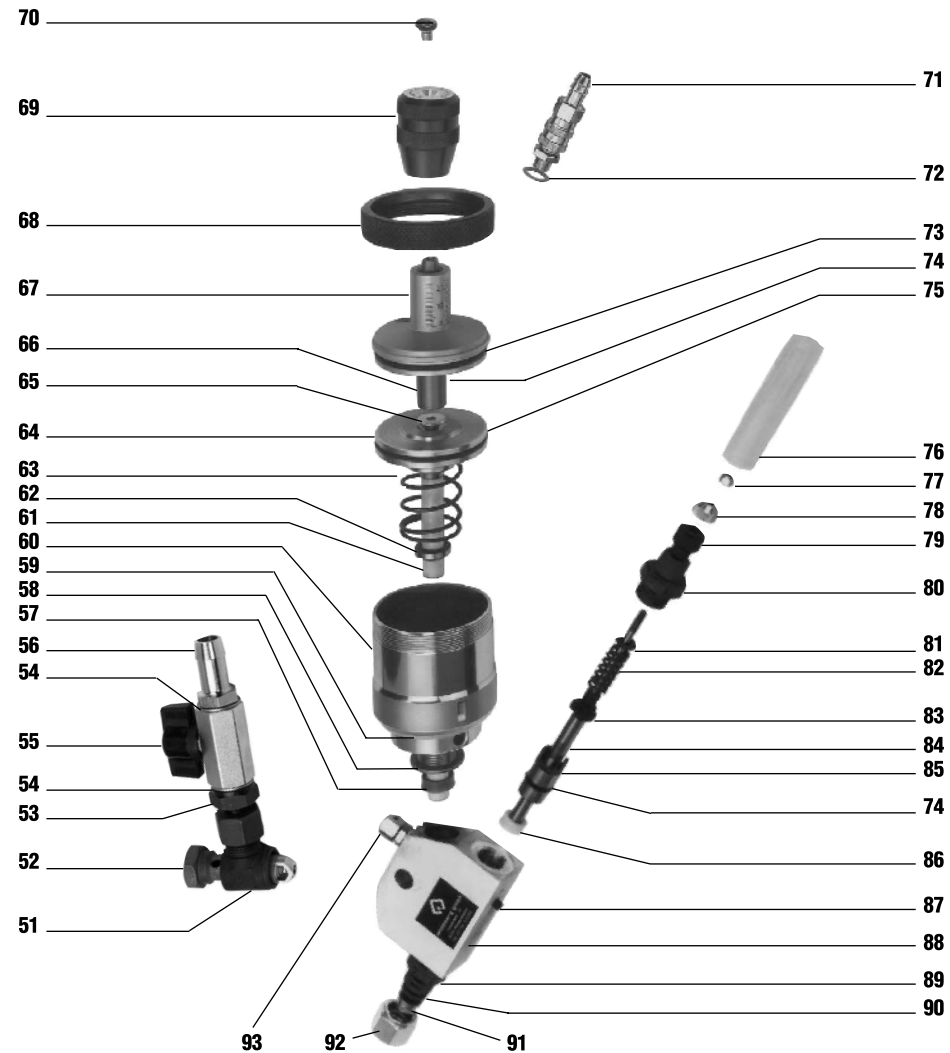
# HDP II (W-2222)

## SOLID COMPOUND APPLICATORS SPARE PARTS LIST



### PART NUMBER

51	Banjo connection	10.181.8
52	<b>Check valve assembly*</b>	10.124.9
53	Connecting piece	10.135.4
54	Sealing ring	10.185.0
55	Stop cock	10.182.6
56	Hose connection	11.172.4
57	<b>Cup seal*</b>	10.166.4
58	<b>Usit sealing ring*</b>	10.167.2
59	Cylinder flange	10.312.8
60	Cylinder	11.148.1
61	<b>Plunger*</b>	10.115.0
62	Strip ring	10.313.6
63	<b>Compression spring*</b>	11.145.7
64	<b>Sealing ring for piston assembly*</b>	10.164.8
65	Countersunk screw	10.169.9
66	Spindle	11.151.1
67	Cylinder cover	11.150.3
68	Retaining nut	11.155.4
69	Knurled knob	11.153.8
70	Flat head screw	11.154.6
71	Quick connection	11.156.2
72	Sealing ring 1/8"	11.157.0
73	<b>O-ring*</b>	10.170.2
74	O-ring	10.161.3
75	<b>Piston assembly*</b>	11.147.3
76	Cap	10.163.0
77	Hexagon nut	10.165.6
78	Knurled nut	10.109.5
79	Compression screw	10.104.4
80	Threaded bushing	10.103.6
81	Spring plate	10.105.2
82	<b>Compression spring*</b>	10.106.0
83	Collar	10.107.9
84	<b>Needle valve*</b>	10.108.7
85	Guide bushing	10.102.8
86	<b>Cup Seal*</b>	10.162.1
87	Grub screw	10.160.5
88	Gun body	10.101.0
89	Insert assembly	10.110.9
90	<b>Valve seat*</b>	10.129.0
91	Nozzle	
92	Retaining nut	10.111.7
93	Bleed valve assembly	10.134.6



\*These parts subject to wear and should be kept in stock.