

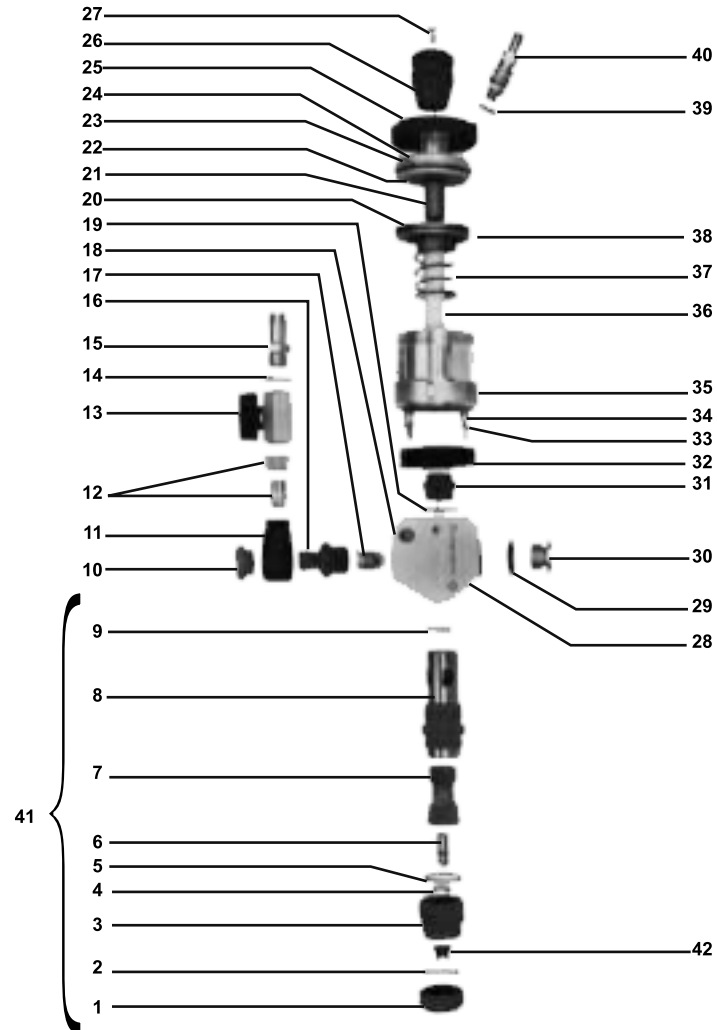
WIDO-SPRAY

COMPOUND APPLICATOR SPARE PARTS LIST



PART NUMBER

01	Nozzel nut	11.001.9
02	Teflon seal	11.175.9
03	Retaining nut	11.002.7
04	Valve seat*	10.129.0
05	O-Ring	11.003.5
06	Valve piston*	11.004.3
07	Piston guide, compl.*	11.012.4
08	Cartridge body	11.008.6
09	Cup seal*	11.009.4
10	Sealing cap	11.173.2
11	Adapter	11.171.6
12	Threaded bush incl. nut	11.176.7
13	Stop cock	10.182.6
14	Sealing ring 1/4"	10.185.0
15	Hose connection	11.172.4
16	Connection piece	11.170.8
17	Compl. check valve*	11.160.0
18	Grooved pin	11.106.6
19	O-ring	11.105.8
20	Flat seal*	10.164.8
21	Spindle	11.151.1
22	O-ring	10.161.3
23	Cylinder cover	11.150.3
24	O-ring	10.170.2
25	Retaining nut	11.155.4
26	Knurled knob	11.153.8
27	Flat head screw	11.154.6
28	Gun body w/ opening for control sensor	11.101.5
29	Usit sealing ring	10.167.2
30	Inspection plug	11.103.1
31	Bush	11.144.9
32	Cylinder flange	11.141.4
33	Retaining ring	11.143.0
34	Fastening screw	11.142.2
35	Cylinder	11.148.1
36	Plunger*	11.146.5
37	Compression spring*	11.145.7
38	Piston assembly*	11.147.3
39	Sealing ring 1/8"	11.157.0
40	Quick connection	11.156.2
41	Complete cartridge	11.000.0
42	Nozzle	



*These parts subject to wear and should be kept in stock. We recommend to stock 1 complete cartridge. So it is possible to change the most important wearing out parts in a very short time.